



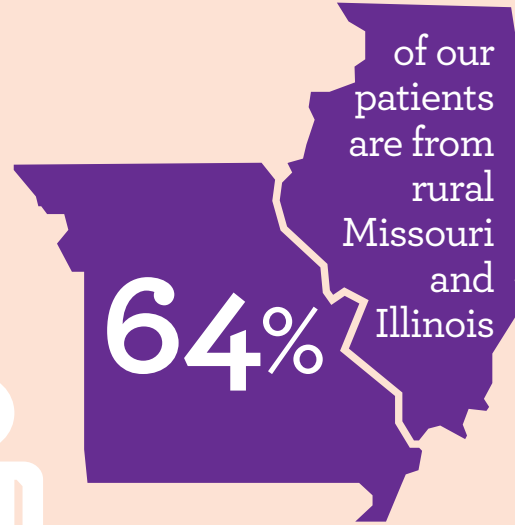
# HAVEN HOUSE

SAINT LOUIS

25 Progress Parkway  
Maryland Heights, MO 63043

HavenHouseSTL.org

314.434.5858



**82%**  
of our patients fall below 3X the poverty level



## RACE/ETHNICITY

Caucasian	88%
Hispanic	6%
African American	2%
Other	4%

<b>PATIENT AGE</b>	0-5	30%
	6-9	13%
	10-14	16%
	15-18	9%
	19-21	3%
	22-34	4%
	35-54	6%
	55+	19%

FY Number of Families

**2,400**

FY Number of People

**6,600**

FY Number of Nights

**6,200**



Average Stay at HavenHouse

**3.2 DAYS**

Longest Stay at HavenHouse

**500+ DAYS**

Pediatric Patients account for

**72%**

of the total population and

**65%**

of all nights

**Adult vs. Pediatric Patient Stay**



Adult

**4.0 DAYS**

Pediatric

**2.8 DAYS**

From January 2005 to June 2019

## HAVENHOUSE HAS SERVED:

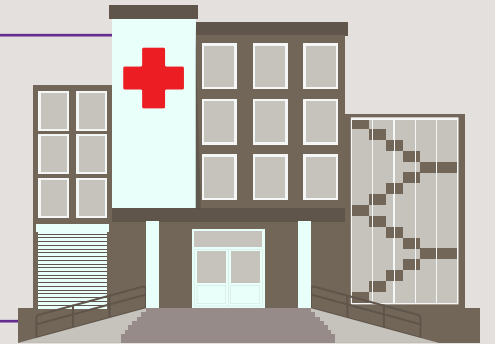


All **50** States & **66** Countries

## PARTNERS

**19**

Hospitals



## REFERRAL LEADERS

- St. Louis Children's Hospital
- Shriners Hospitals for Children
- Barnes - Jewish Hospital
- Siteman Cancer Center
- Barnes - Jewish West Hospital

## DEPARTMENTS

- Orthopedic
- Oncology
- Surgery
- Neurology
- Cardiology

PATIENT STATISTICS FY 2019\*

\*We paused services in March to relocate